



Arranged by STRATA Benefits Consulting Inc.



Individual Health & Dental Coverage

STRATA Benefits Consulting

is pleased to provide you with information on **Individual Health and Dental Plans**.

STRATA has access to information from top Health and Dental providers that offer a variety of choice to cover the benefits that best fit your life.

One of our partners is **Group Medical Services (GMS)**, a Canadian health insurance provider. The GMS Individual Health Plan Options provide coverage that is flexible with a reasonable cost.

GMS Coverage Includes:

OmniPlan®

Your premier health insurance choice. You get extensive health benefit coverage including health practitioner services like physiotherapy and message therapy, vision care, glasses and much more.

ExtendaPlan®

Comprehensive coverage with a wide range of benefits including coverage for medical emergencies, medical supplies & equipment and a variety of health specialists.

BasicPlan

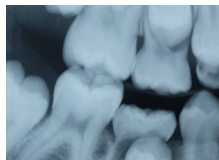
Ideal coverage for unexpected emergencies including those essential health benefits not covered under your provincial health plan - like ambulance services, preferred hospital rooms and in-hospital drugs.

Additional Coverage Options

Complete your coverage with options for Prescription Drugs, Dental Care, Hospital Cash and Travel Benefits.

For Plan Summaries, Premium Calculators, and to Apply On-line [Click Here](#)

For questions concerning which plan is right for you or information on plans available through other health insurance providers, please call **STRATA Benefits Consulting Inc.** at **(204) 984-9450**.



Trademarks held and plans underwritten by Group Medical Services. Group Medical Services is the operating name for GMS Insurance Inc. in provinces outside of Saskatchewan.

These plans require a medical questionnaire to be completed so the premium charged and/or benefits offered may be subject to adjustment or modification in coverage, or declined based on your medical background..